



Yes, being the first RI detector for UHPLC *can* induce a sense of loneliness.

But don't worry, the Optilab® UT-rEX™ connects to *any* UHPLC system, so you can finally get information that was *undetectable* with UV and *unavailable* from mass spec or ELSD. The Optilab has superb linearity with no loss of resolution or throughput. No wonder other RI's are so depressed.

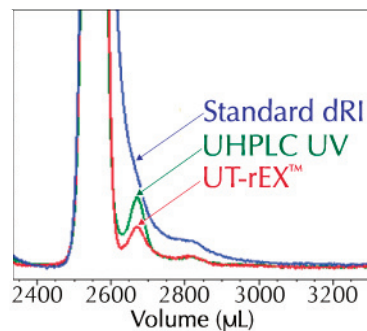
Since the UT-rEX's sensitivity doesn't depend on chromophores, you can probe samples that were impossible to analyze on UHPLC using UV.

How does the UT-rEX do it? Well, its small internal volume minimizes post-column broadening while its

high data rate ensures the capture of fast, narrow peaks. And the built-in Peltier lets you control temperatures anywhere from 4°C to 50°C.

The UT-rEX has 256 times the detection power and up to 50 times the dynamic range of any on-line RI detector, to pick up large *and* small signals within the same data run.

For more information please call (805) 681-9009 or visit us at wyatt.com. We'll provide all the analysis you need ...without driving you crazy.



www.wyatt.com



info@wyatt.com



[/company/wyatt-technology](https://www.linkedin.com/company/wyatt-technology)



[@wyatttechnology](https://twitter.com/wyatttechnology)